



**OPMI LUMERA 300 from ZEISS**  
Best-in-class visualization

With new  
BrightFlex®  
LED illumination



We make it visible.



## The new ZEISS OPMI LUMERA 300

The OPMI LUMERA® family from ZEISS represents excellence in optics and illumination, with a reputation for delivering high quality of visualization technology designed in Germany. The new ZEISS OPMI LUMERA 300 with BrightFlex® LED illumination technology delivers on this promise. It represents the entry into the OPMI LUMERA world and provides:

**Best-in-class visualization from ZEISS.**

### Your key benefits

- **Experience best-in-class visualization**  
BrightFlex LED illumination, unmatched optical performance, less stress for your patients
- **Get exceptional reliability**  
Outstanding ZEISS quality, fully integrated system, maximum system uptime
- **Discover usability at its best**  
One-button design, ergonomic foot panel





**One-button design**

- No complicated settings
- Convenient parking position function

**Unmatched ZEISS optics**

- Exceptional contrast
- Unparalleled clarity
- Outstanding light transmission

**Integrated camera (optional)**

- Full-HD video

**BrightFlex LED illumination**

- Brilliant red reflex
- Adjustment of brightness

**Independent assistant's microscope (optional)**

- Independent of main microscope
- No light from main microscope required

**Fundus viewing system (optional)**

- Compatible with RESIGHT® 500 from ZEISS
- Clear brilliant view of the retina

**Foot panel**

- Precise control over light, focus, X-Y positioning and magnification



*Fully equipped ZEISS OPMI LUMERA 300  
in "Advanced" configuration*



## Best-in-class visualization

### **BrightFlex for an adaptable, brilliant red reflex**

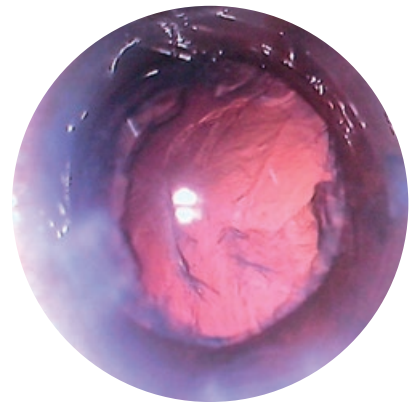
The new variable electronic LED illumination technology BrightFlex from ZEISS delivers a greatly improved red reflex for more confidence in cataract surgery. It allows you to individually adapt the brightness of the red reflex to your individual needs – unique in this segment.

### **Unmatched optical performance**

All optic elements are apochromatic, providing an exceptional view in terms of contrast and resolution. The ZEISS OPMI LUMERA 300 delivers a clarity of detail that is unparalleled in this class.

### **Less stress for your patients**

With outstanding light transmission, the ZEISS OPMI LUMERA 300 results in significantly reduced light exposure for your patients, leading to less stress on the eye.



*BrightFlex: delivering a brilliant red reflex*



*ZEISS OPMI LUMERA 300 in „Advanced“ configuration with assistant's microscope and HD camera*



## Exceptional reliability

### Outstanding quality from ZEISS

The ZEISS name has always stood for quality products that live up to the highest German engineering standards.

The ZEISS OPMI LUMERA 300 is no exception to this rule. The superiority of the optical and mechanical components means you have the most reliable partner by your side.

### Fully integrated system

The ZEISS OPMI LUMERA 300 features a fully independent assistant's microscope that does not take light from the main microscope. Also available are a HD camera as well as the fundus viewing system ZEISS RESIGHT 500, allowing a clear view during retina surgeries – all fully integrated.

### Maximum system uptime

The LED illumination of the ZEISS OPMI LUMERA 300 has a lifespan that is up to 1,000 times longer than that of the halogen bulbs used in competing surgical microscopes – for significantly reduced running costs and continuous operation. And with OPTIME service packages from ZEISS featuring preventive and corrective maintenance, as well as spare parts, you get maximum system uptime and convenience.

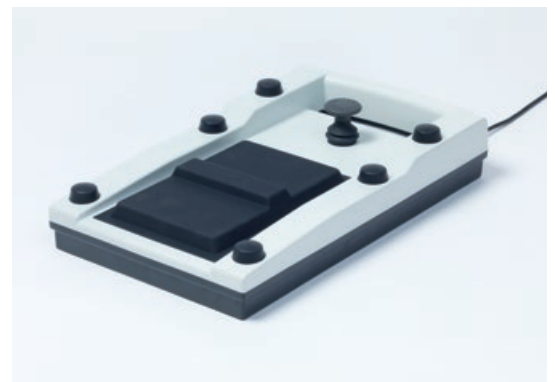
## Usability at its best

### One-button design

Simply push one button to activate your ZEISS OPMI LUMERA 300 and start your surgery with exactly the same light settings as before – no complicated adjustments are necessary. Once your microscope is brought back to the parking position the light will automatically switch off, and the X-Y coupling will be centered.

### Ergonomic foot panel

Concentrate on the surgery without distraction and interruption: precisely adjust the light intensity, level of focus, X-Y positioning, and magnification through the convenient, ergonomic foot panel of the ZEISS OPMI LUMERA 300.



*Ergonomic foot panel*

# Technical Specifications and Configurations

## OPMI LUMERA 300 from ZEISS

	Basic	Standard	Advanced
<b>Optic</b>			
Focus range	48 mm	48 mm	48 mm
Objective lens	f=200 mm	f=200 mm	f=200 mm
Wide-angle eyepiece	10x	10x	10x
Magnification	Manual 5-step magnification changer	Motorized zoom	Motorized zoom
Binocular tube	45° Inclined tube f=170 mm	45° Inclined tube f=170 mm	180° Swivel tube f=170 mm
Apochromatic optic	●	●	●
Integrated assistant interface	○	●	●
<b>Illumination</b>			
BrightFlex illumination	●	●	●
LED light source	●	●	●
Filter	Color enhancement, ha-mode, blue-blocking		
<b>Operation</b>			
Wired foot control panel	●	●	●
X-Y coupling (Range 61 x 61 mm)	○	○	●
Floor stand S200	Cataract version	Cataract version	Cataract/retina version
<b>Accessories</b>			
Integrated HD camera	○	○	○
Assistant package (Assistant's microscope, magnification changer, 45° inclined tube)	○	○	○
Retina package (Assistant's microscope, magnification changer, 110° inverter tube, fundus viewing system RESIGHT 500 starter set)	–	–	○
<b>Service</b>			
OPTIME service package	○	○	○

○ Option ● Standard



EN\_32\_010\_001811 International version: Not for sale in the United States CZ-IV/2015  
 Not all products, services or offers are approved or offered in every market and approved labeling and instructions may vary from one country to another. The contents of the brochure may differ from the current status of approval of the product in your country. Please contact our regional representative for more information. Subject to change in design and scope of delivery and as a result of ongoing technical development.  
 OPMI LUMERA, BrightFlex and RESIGHT are either trademarks or registered trademarks of Carl Zeiss Meditec AG.  
 © Carl Zeiss Meditec AG, 2015. All copyrights reserved.

 **Carl Zeiss Suzhou Co. Ltd.**  
 Modern Industrial Square 3-B  
 No. 333 Xing Pu Road  
 Suzhou Industrial Park, Suzhou  
 China 215126  
[www.zeiss.com/lumera300](http://www.zeiss.com/lumera300)

 **Carl Zeiss Meditec AG**  
 Goeschwitzer Strasse 51–52  
 07745 Jena  
 Germany  
[www.zeiss.com/lumera300](http://www.zeiss.com/lumera300)